

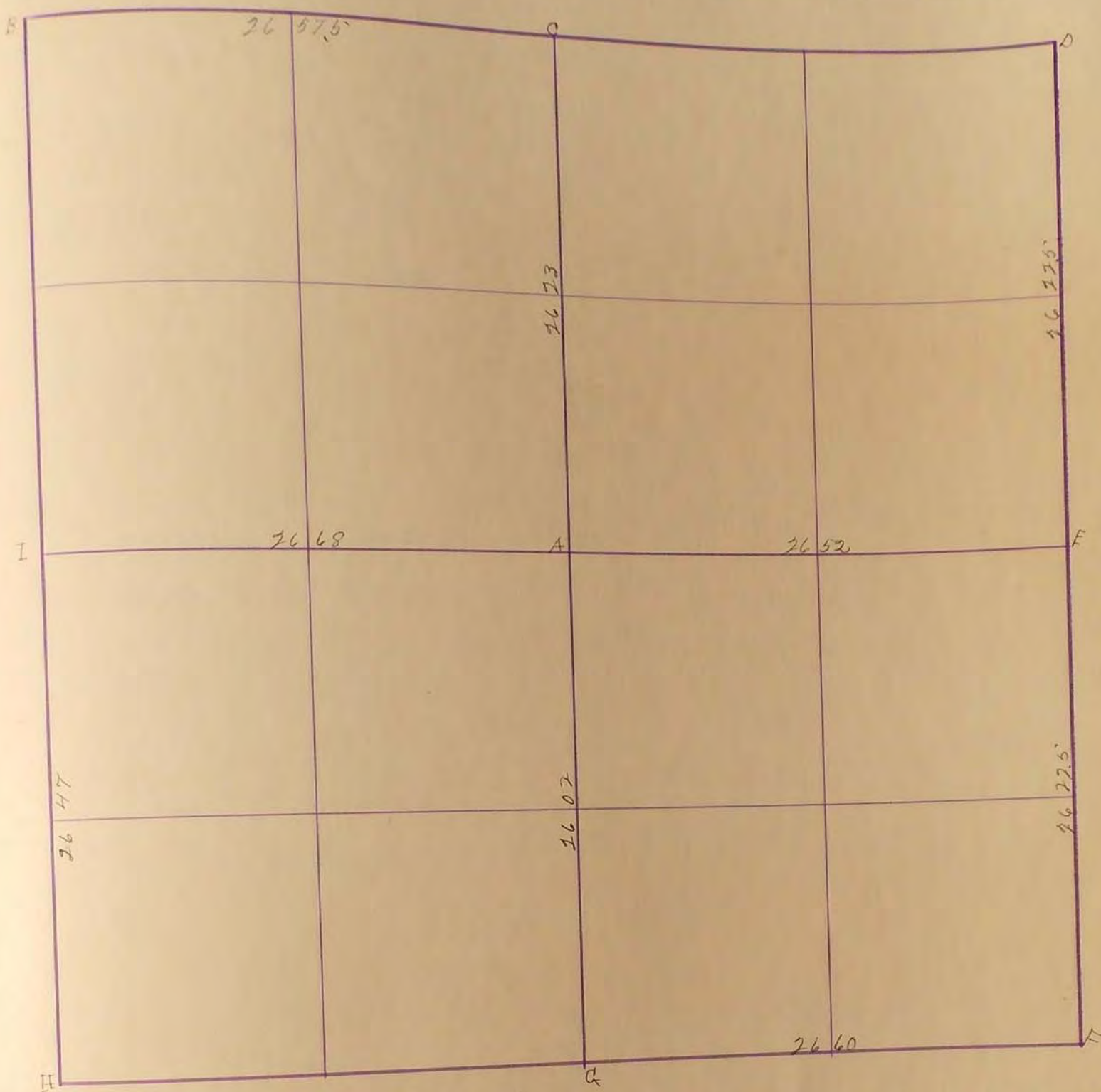
MURRAY COUNTY.

Section 35

Township 105

Range 42

10798 McGill-Warner Co., Blank Book Manufacturers, St. Paul.



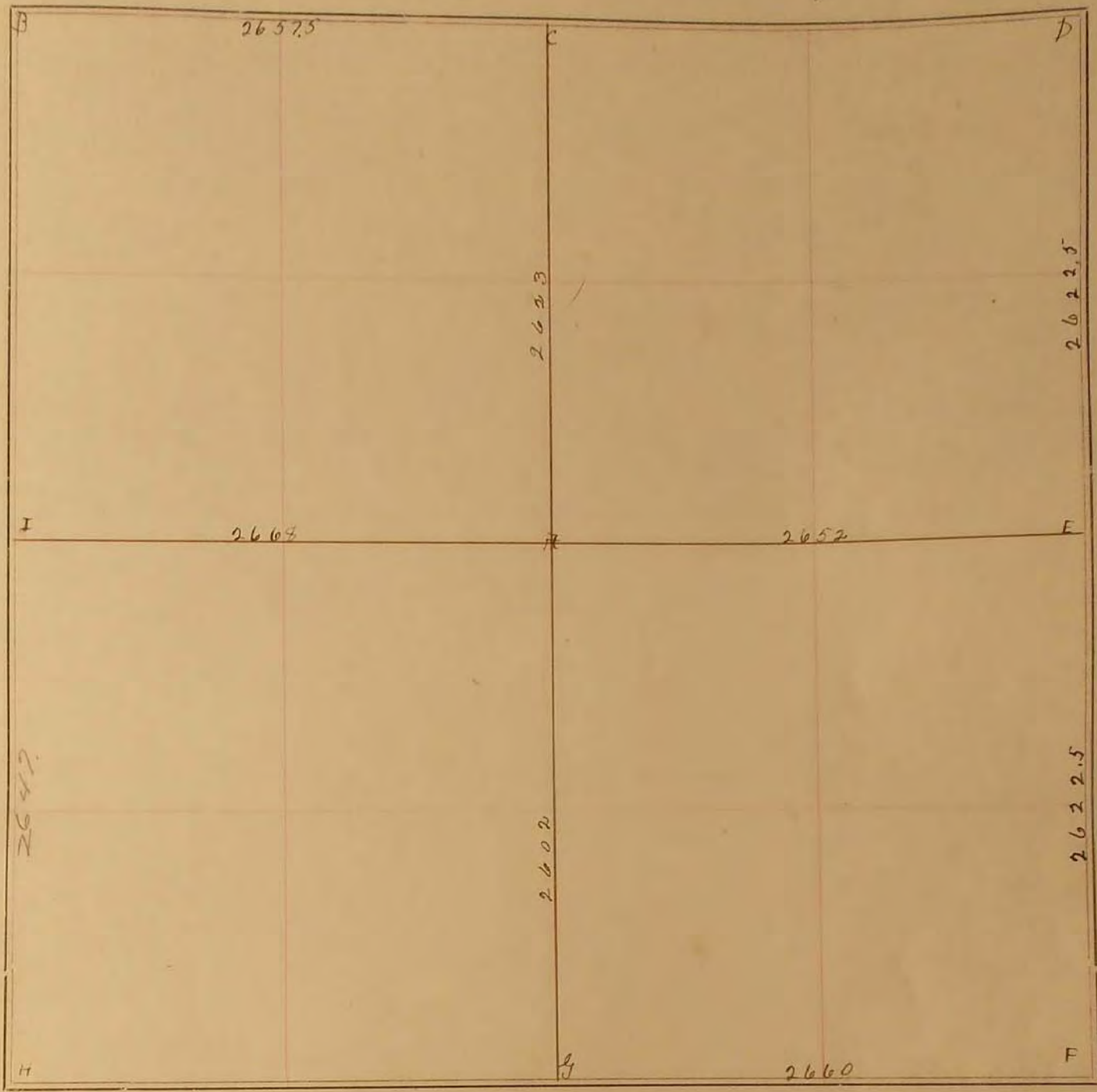
- A. Stone nearly round 10X10X12 May 25 1901
April 1901
H&C in C.F.P. SW 47.08, H&C in P.P. NW 57.55
"B" Stone - Placed 1/4" Iron & above - N&C in C.F.P. NE 46.85
 - B. " in grade
 - C. " " " 8X10X14
 - D. " " " "
 - E. " " " 8X12X18
 - F. " " " "
 - G. " " " + X in mound + pits
 - H. " " " grade 8X10X14
April 1900
Top S.F.P. SE EA.75', Top S.F.P. NE 60.25'
Top S.F.P. NW 58.20'
 - I. J.H. Hoosleteneroff
"I" Stone - placed Bridge Butt above
- Sept 25 1930
- D. P. Cor. 47.08 E. F. Cor 47.6 S.W. F. Cor. 42.0 N.W.
 - B. Cottonwood 12" 40' S.W. - F. Cor. 43.6 N.E.
 - L. Fence on line 34.6 W. - Fence on line 23.5 E
 - H. F. Cor. 46.3 N.W. - F. Cor 47.0 N.E. - F. Cor 38.4 S.E. - F. Cor. 37.9 S.W.

SURVEY No. _____

Section 35

Town 105

Range 42



FIELD NOTES.

- A Stone nearly round 10x10x12 MAY, 25, 1901,
- B " in grade
- C " " " 8x10x14
- D " " "
- E " " " 8x12x15
- F " " "
- G " " + x in mound + pits
- H " no corner
- I " " grade 6x10x14

Sept. 25, 1930 Jew Woodstone map

D. Elev. 47.0 SE, Elev. 47.6 SW, Elev. 42.0 NW

B. Cottonwood 12° 60' SW. - Elev. 43.6 NE.

I. Elev. on line 34.6 W. - Elev. on line 23.5 E

H. Elev. 46.3 NW - Elev. 47.0 NE - Elev. 38.4 SE - Elev. 37.9 SW.